

PROJECT:
5 CLASSROOM ADDITION

LOCATION:
WEST NAVARRE INTERMEDIATE
SCHOOL
1970 COTTON BAY LANE
NAVARRE, FL 32566

CONSULTANTS:

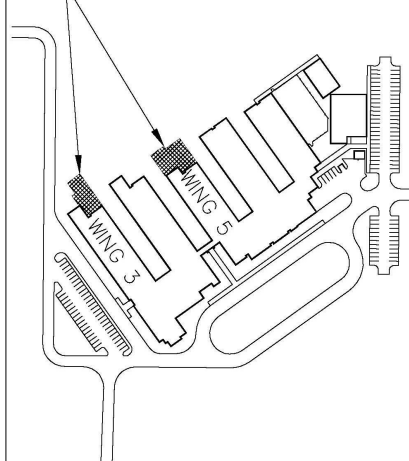
JEHLE-HALSTEAD, INC.
49 EAST CHASE STREET
PENSACOLA, FL 32507

CRAFT & WEBSTER
STRUCTURAL ENGINEERS, INC.
129 HIGHPOINT DRIVE
GULF BREEZE, FL 32561

GULF BREEZE CONSULTING, INC.
139 EAST GOWENHURST STREET
PENSACOLA, FL 32502

ADAMS CONSULTING
ENGINEERING, INC.
3 WEST GARDEN STREET - SUITE 382
PENSACOLA, FL 32502

NEW
CLASSROOM ADDITIONS



WEST NAVARRE
INTERMEDIATE

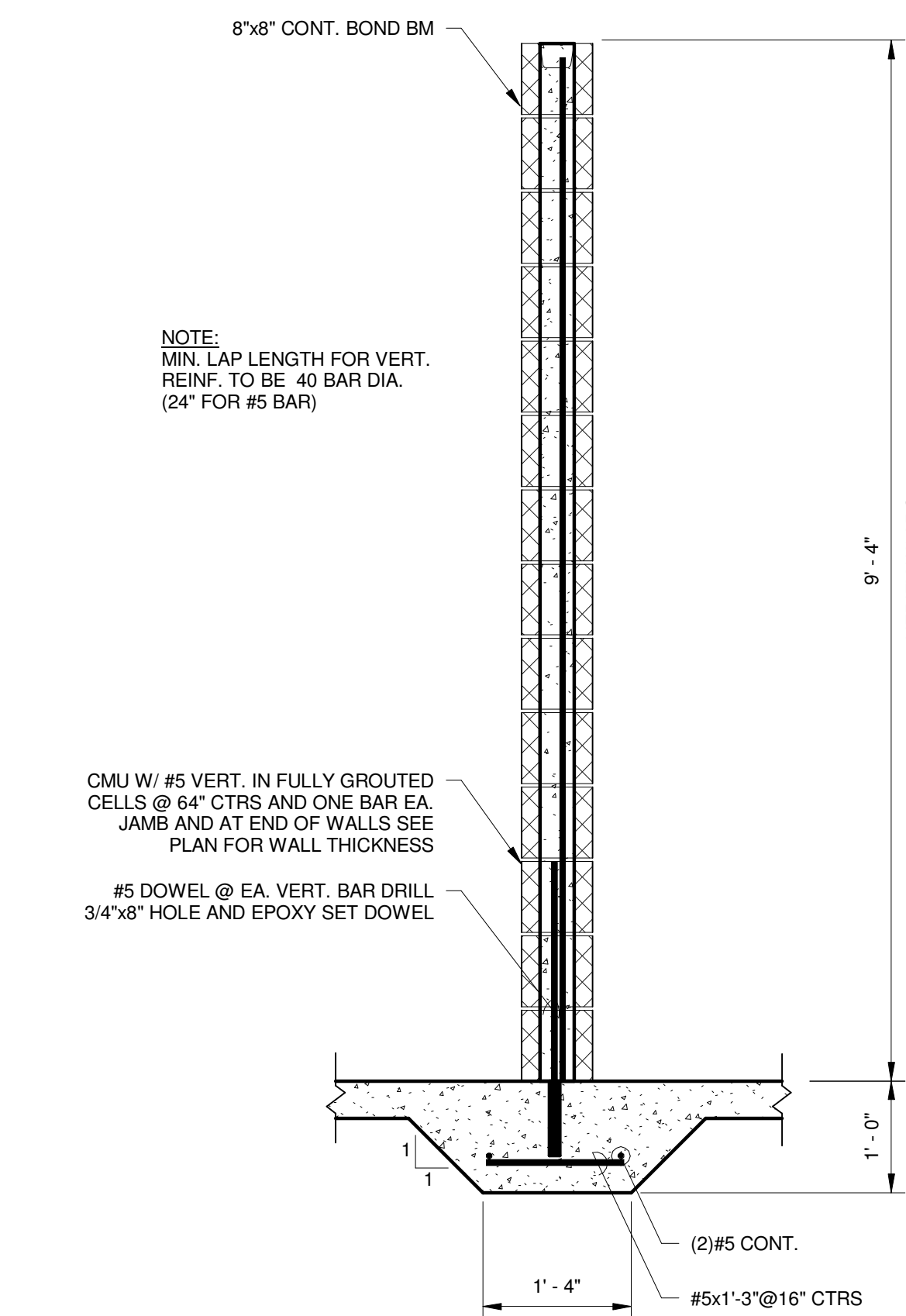
No.	Revision/Issue	Date

DRAWN BY:
CHECKED BY:
C&W S E
PROJECT #:
REVIEW:
PERMITTING:
RELEASE FOR BIDDING:

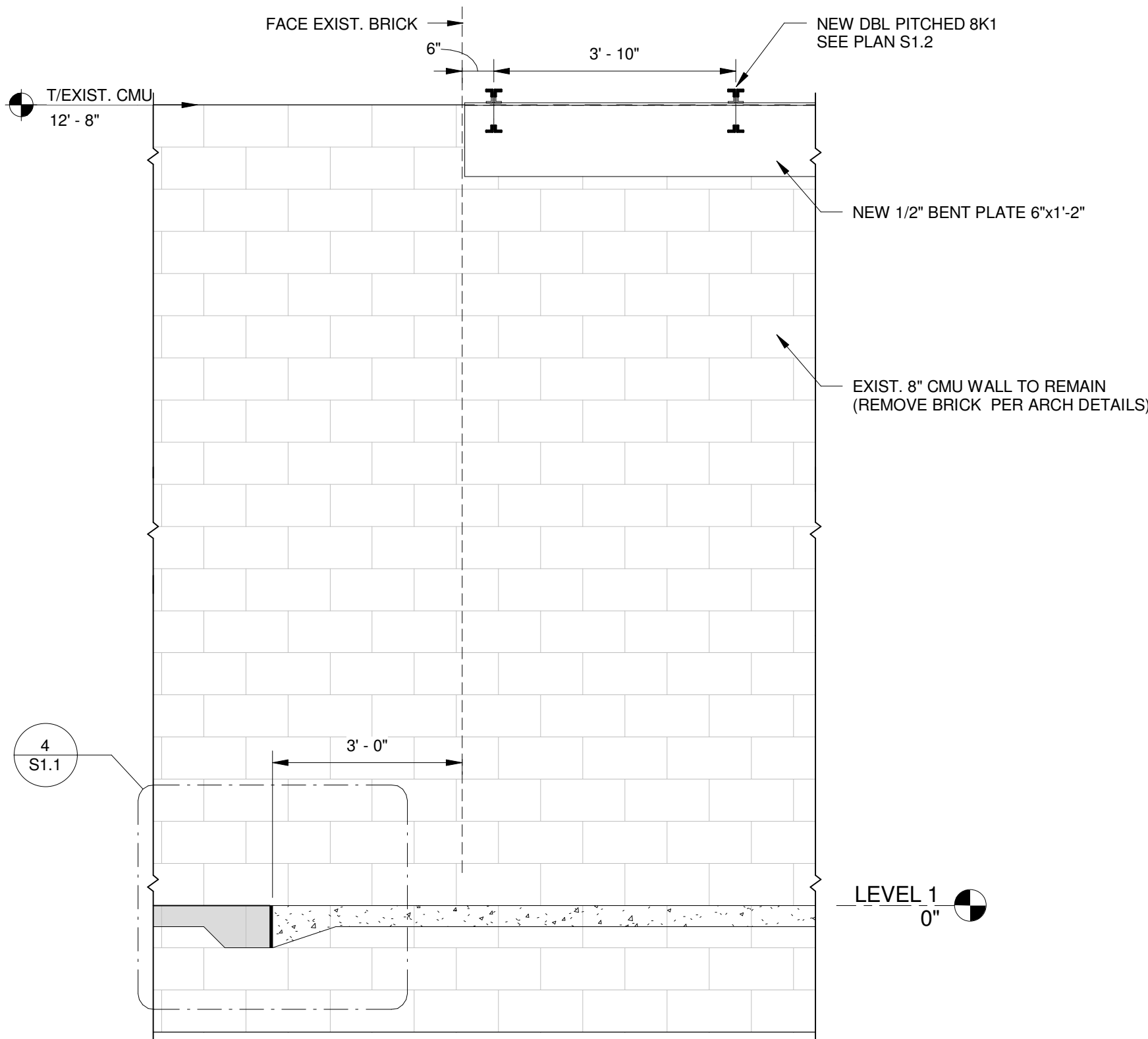
Author
Checker
11-046
09-06-11
09-09-11
09-19-11

SECTIONS AND DETAILS

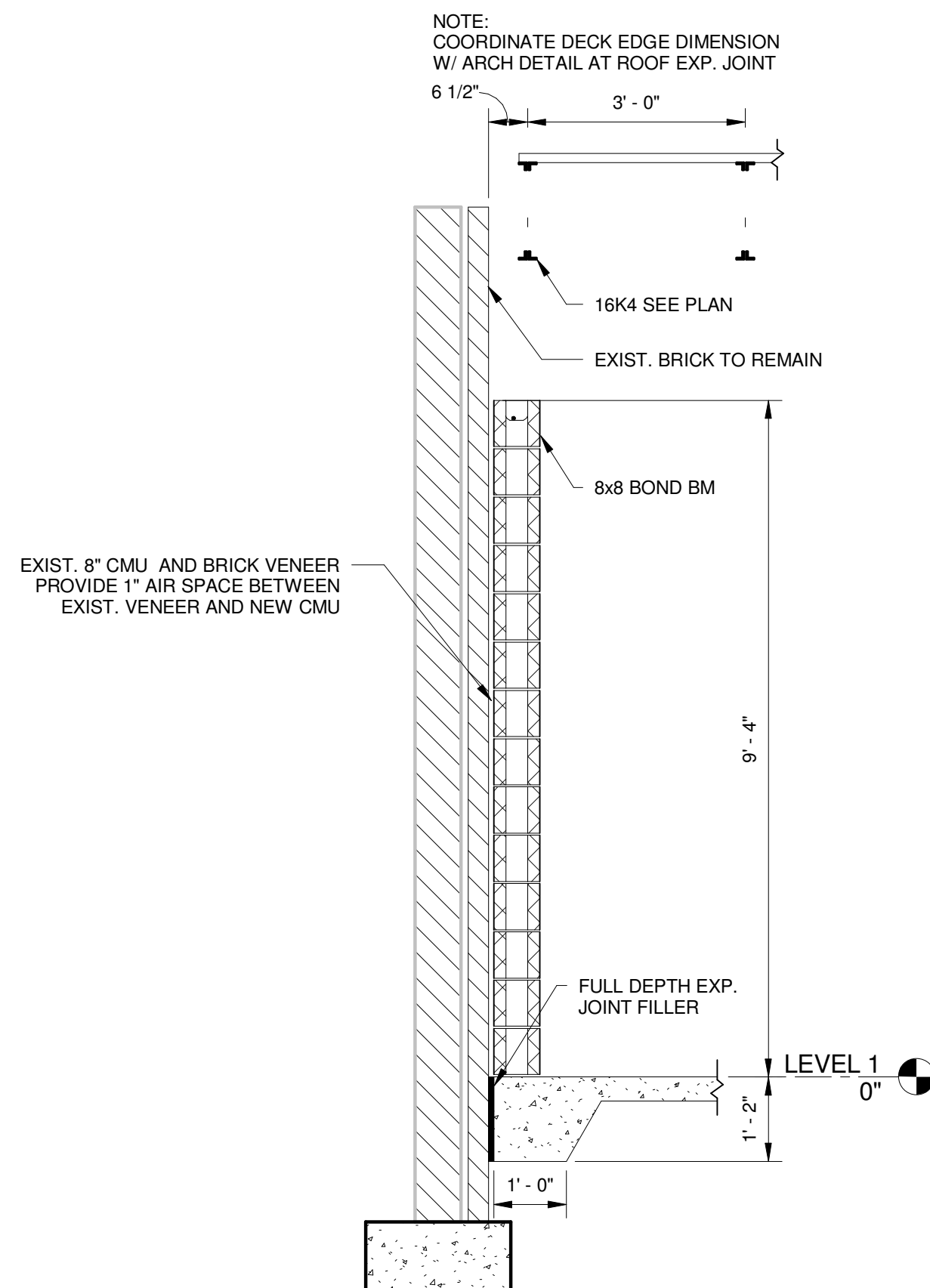
S3.1



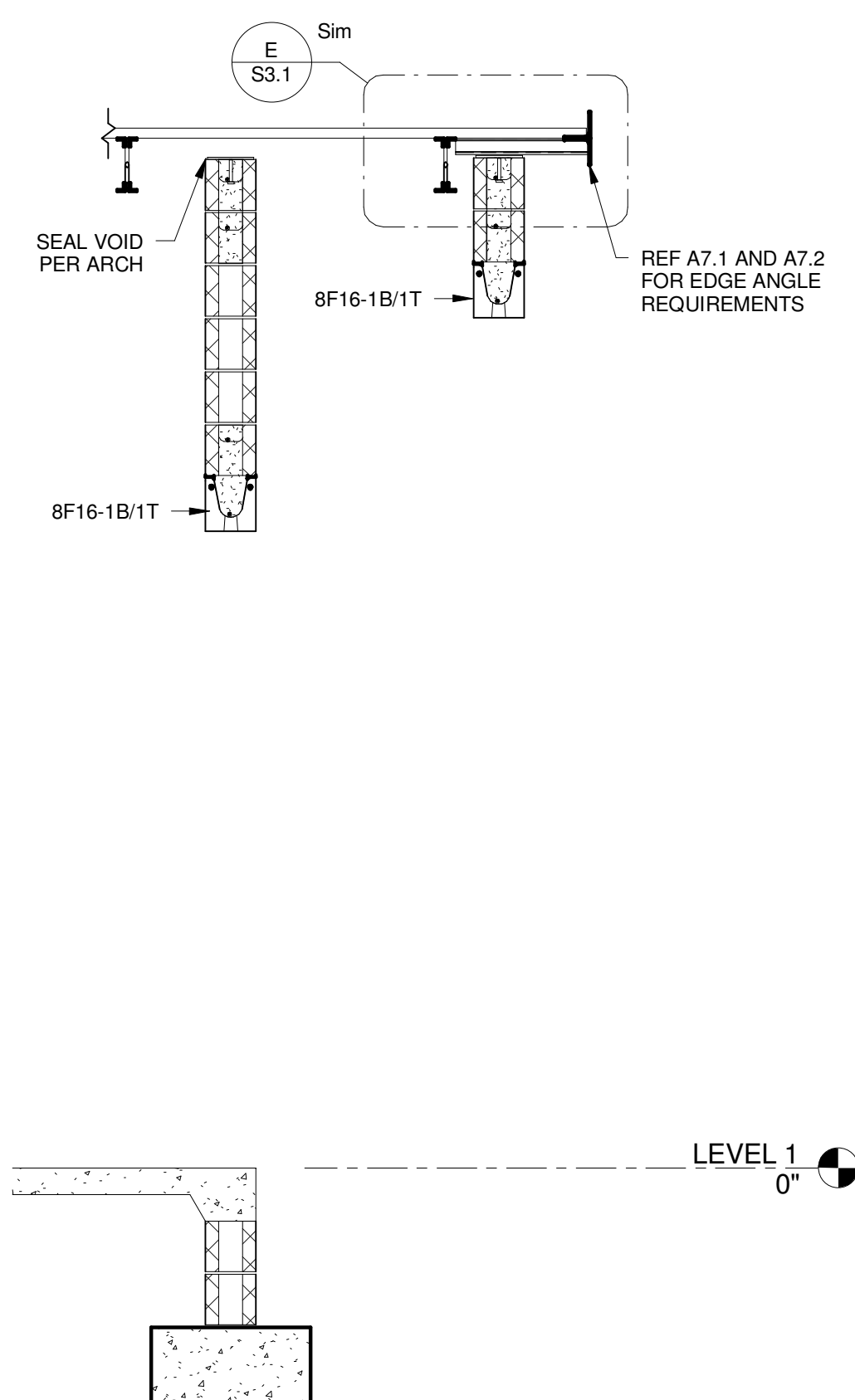
A TYP. SECTION @ INTERIOR CMU
3/4" = 1'-0"



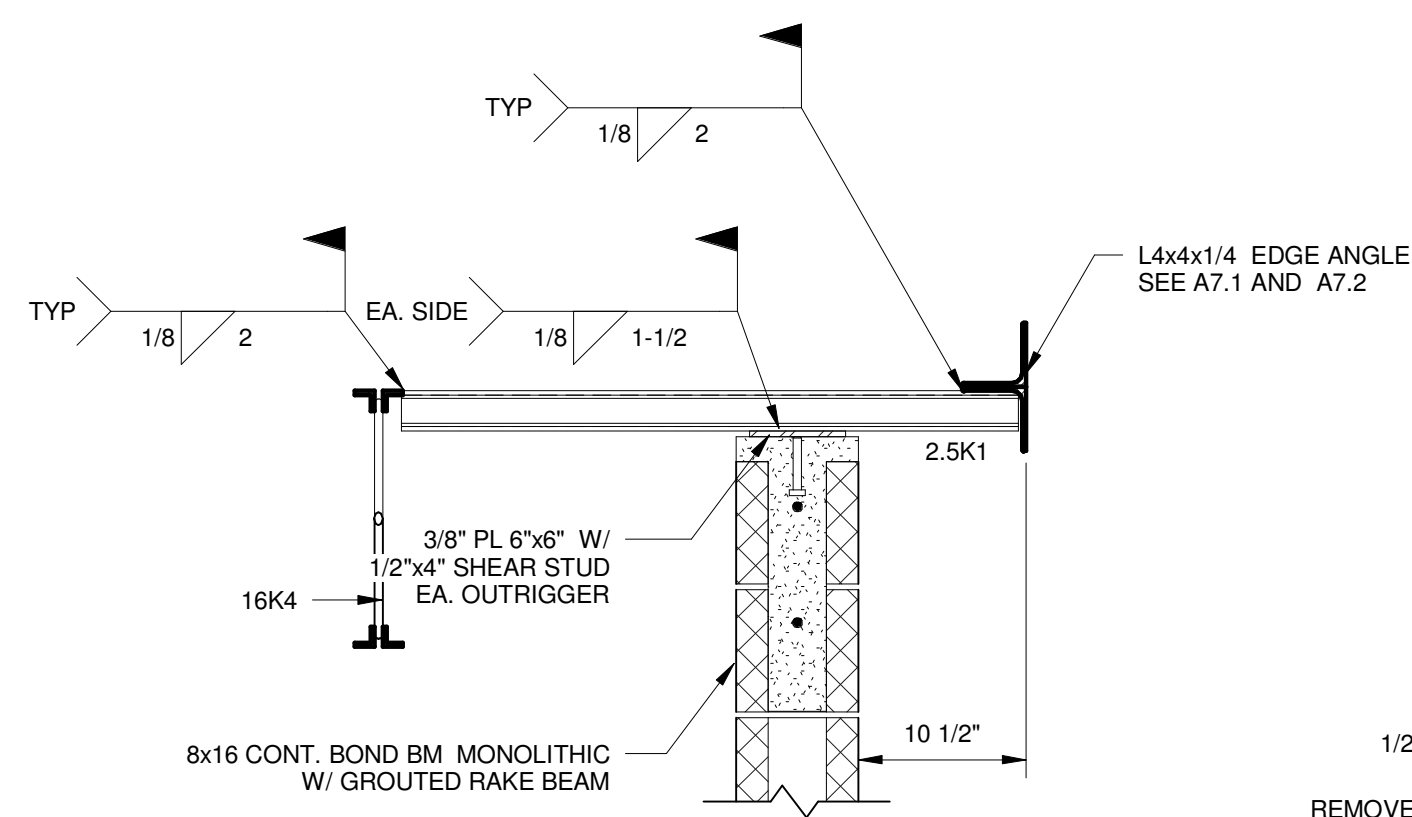
B SECTION @ BLDG TIE IN
1/2" = 1'-0"



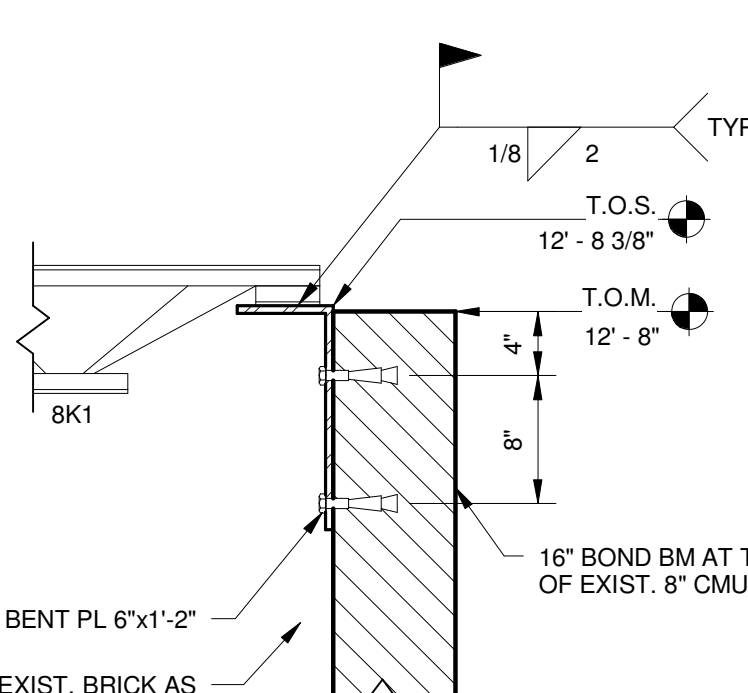
C SECTION - EAST WALL AT EXIST BLDG
1/2" = 1'-0"



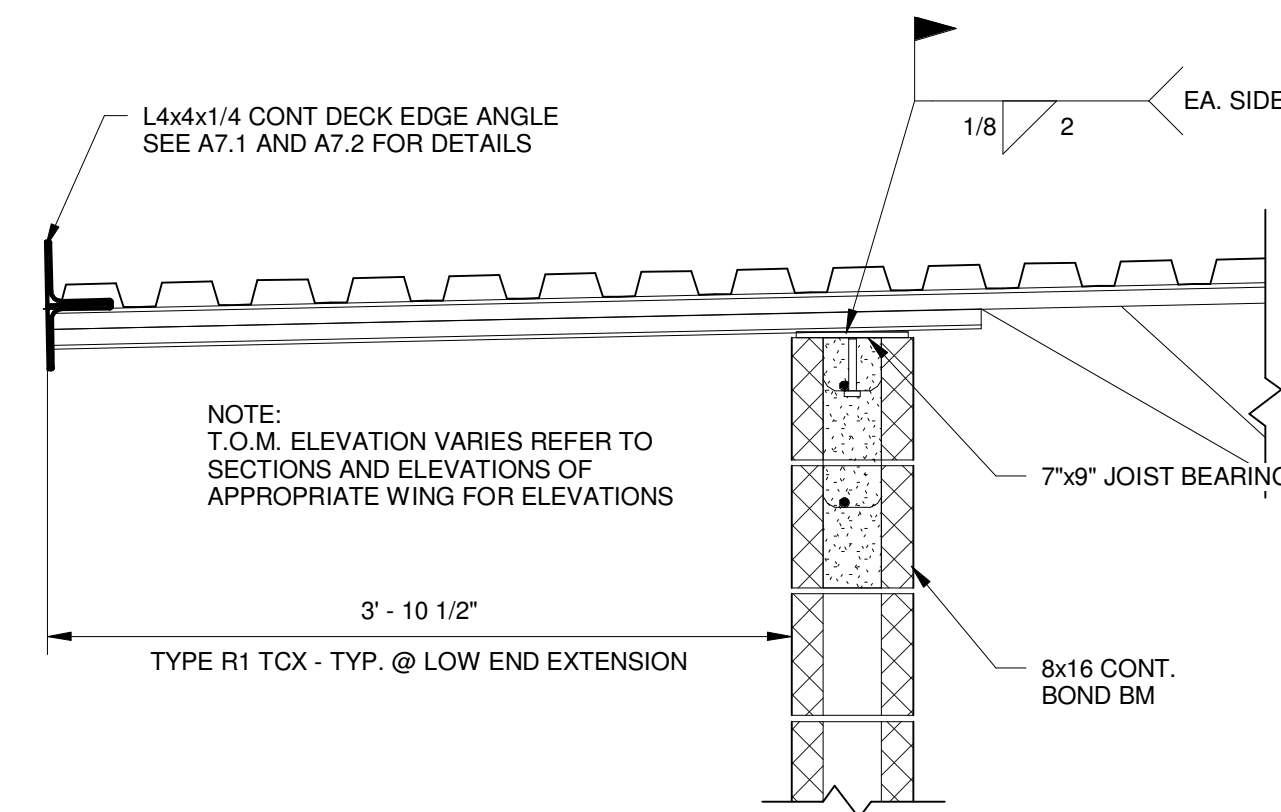
D SECTION THRU WEST ENTRY
1/2" = 1'-0"



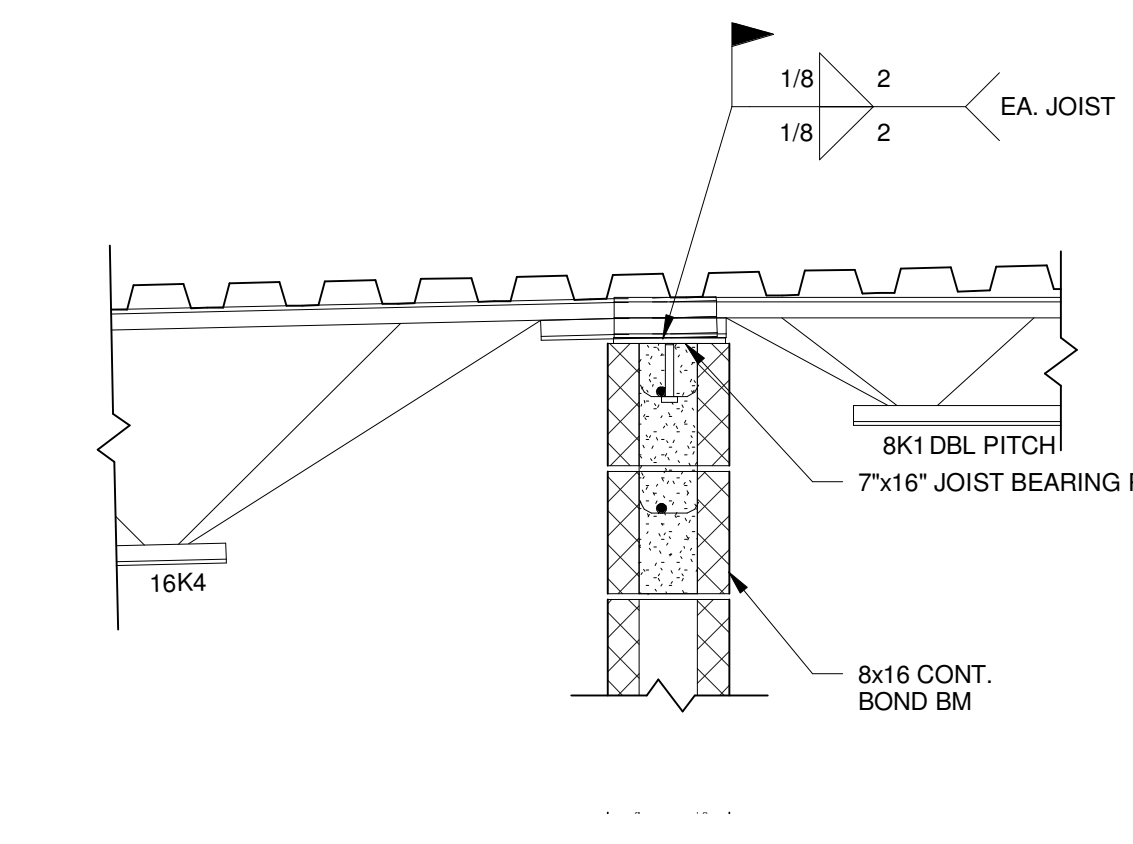
E TYP. SECTION @ OUTRIGGER
1" = 1'-0"



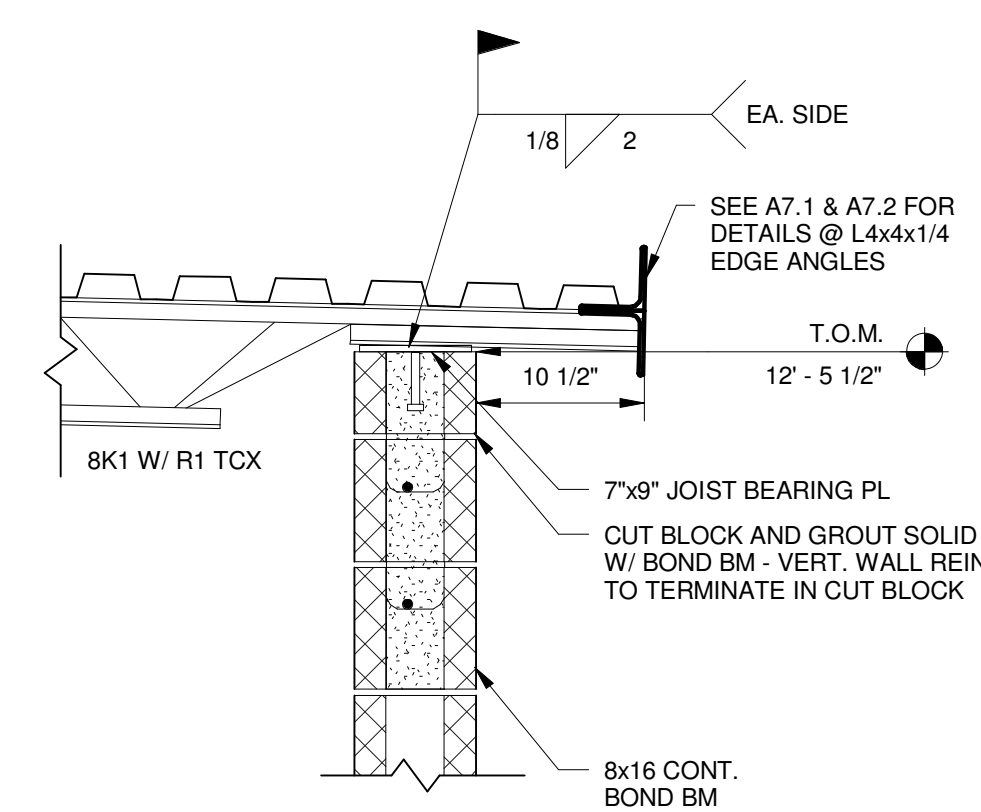
1 DETAIL - 8K1 BEARING
1" = 1'-0"



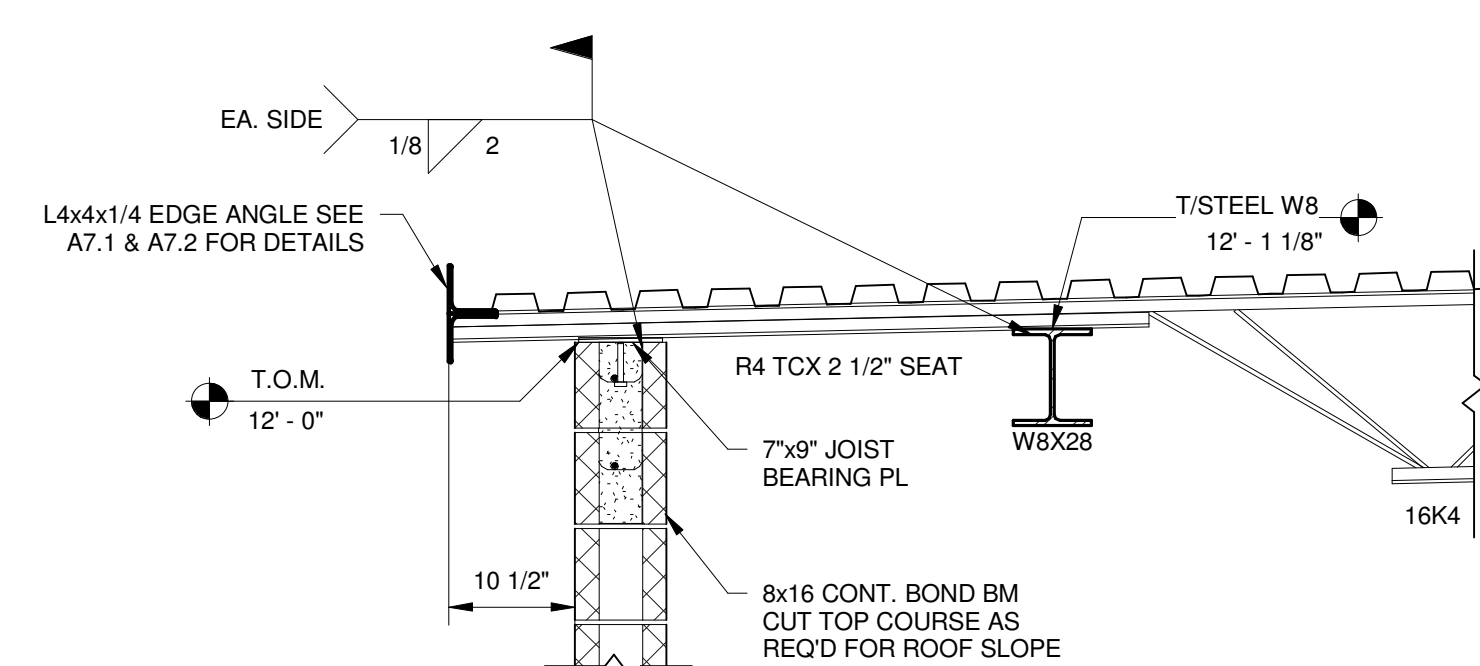
2 DETAIL - LOW END JOIST BEARING
1" = 1'-0"



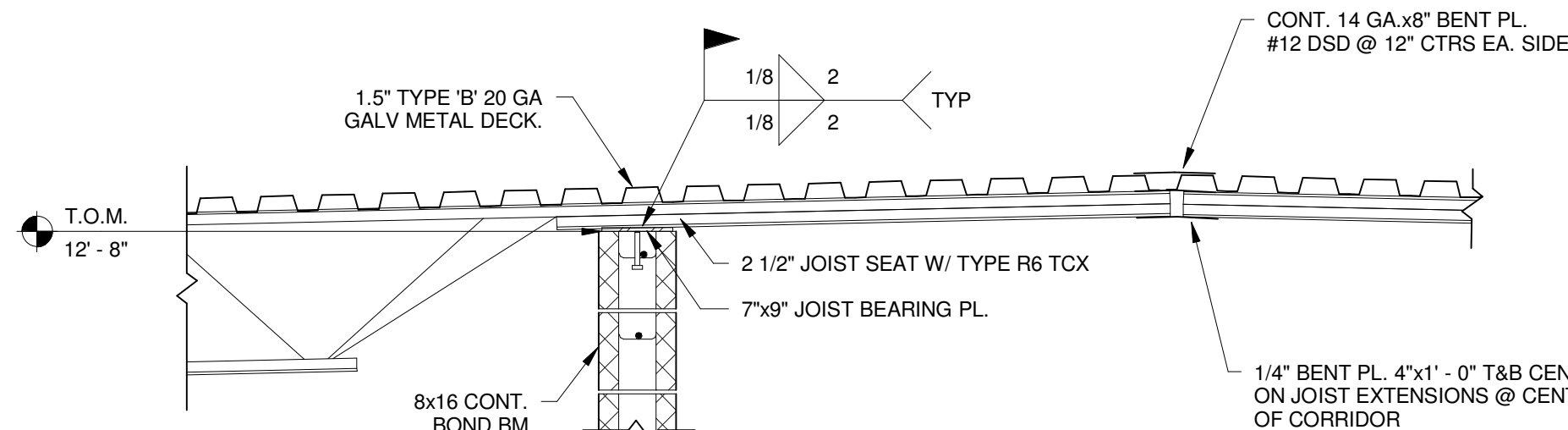
3 DETAIL - INTERIOR MASONRY BEARING
1" = 1'-0"



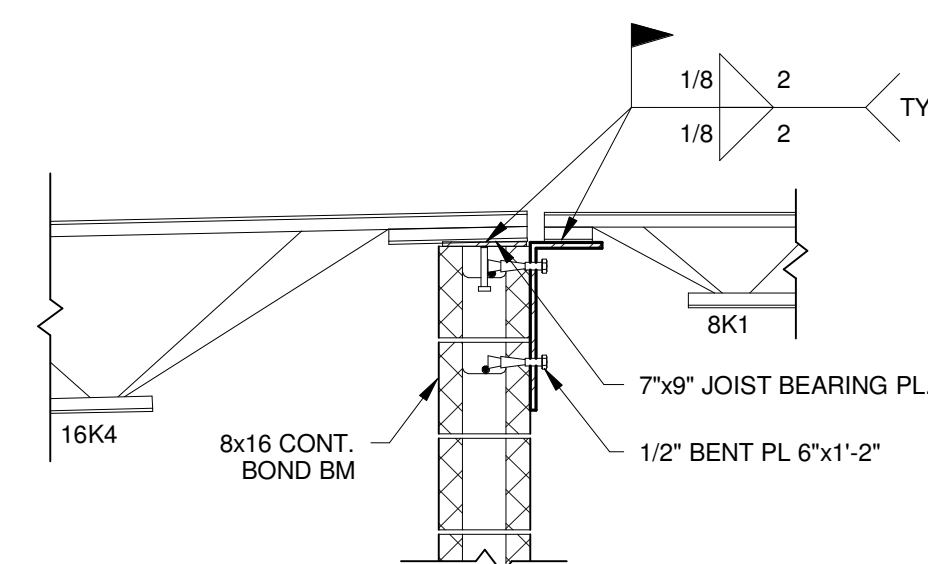
4 DETAIL - 8K MASONRY BEARING
1" = 1'-0"



5 DETAIL - JOIST BRG MECH RM 510D
3/4" = 1'-0"



6 DETAIL - TCX @ CORRIDOR
3/4" = 1'-0"



7 INT. JOIST BEARING - WING 5
3/4" = 1'-0"